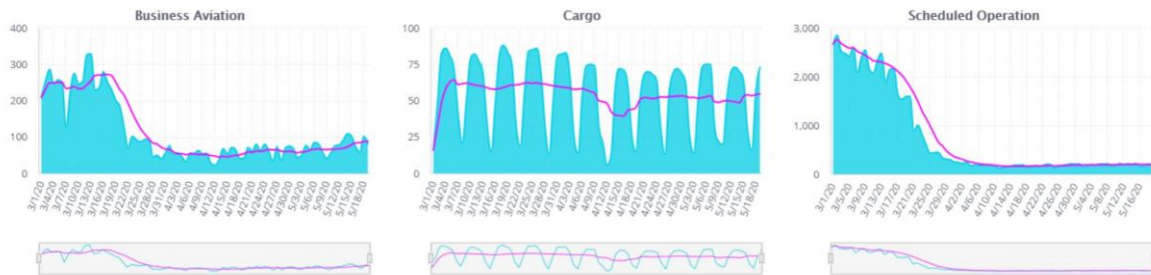


Business aviation (business jet and turboprop) activity in the UK is 55% below normal trends for the period from 1<sup>st</sup> March through 18<sup>th</sup> May. Since the trough in activity in mid-April, average daily activity has picked up by 15%.

**Chart 1: Flights from UK March 1<sup>st</sup> through 18<sup>th</sup> May 2020, business aviation vs cargo vs scheduled (commercial)**



Just under 9K sectors flown from the UK since March 1<sup>st</sup> through mid-May, a little less than France and Germany. UK declines are typical of the European trend, not as bad as Italy, less resilient than in Germany and especially Sweden.

**Chart 2: Business aviation flights from UK March 1<sup>st</sup> through 18<sup>th</sup> May 2020, by departure country**

Departure Country	Flights	Flight Hours	MTD:Flights	MTD:Hours
Germany	10,074	12,687	-47.9%	-47.6%
France	9,700	13,312	-60.3%	-61.4%
United Kingdom	8,945	16,256	-55.2%	-50.7%
Switzerland	4,198	6,746	-55.3%	-50.4%
Spain	3,921	7,537	-55.9%	-55.5%
Norway	3,495	3,198	-28.3%	-32.4%
Sweden	3,179	3,816	-16.5%	-18.7%
Russia	2,949	7,240	-44.2%	-50.9%
Italy	2,812	3,652	-75.6%	-78.1%
Turkey	1,739	2,700	-51.7%	-56.1%
Austria	1,670	2,480	-59.8%	-55.1%
Netherlands	1,195	1,795	-59.1%	-57.3%
Finland	1,021	1,278	-38.3%	-38.3%
Belgium	1,006	1,357	-63.7%	-65.7%
Poland	847	1,206	-57.3%	-56.8%
Grand Total	65,590	102,666	-54.3%	-53.8%

At the UK airport level, Luton and Farnborough at the busiest airports for business aviation since March 1<sup>st</sup>, although Biggin Hill activity has been much less affected.

**Chart 3: Flights from UK March 1<sup>st</sup> through 18<sup>th</sup> May 2020, by departure airport**

Departure Airport	Departures	MTD: Departures
EGGW,LTN,London Luton ,London	1,154	-61.2%
EGLF,FAB,Farnborough ,Farnborough	1,137	-60.9%
EGKB,BQH,London Biggin Hill ,London	986	-40.0%
EGSS,STN,London Stansted ,London	495	-49.2%
EGNX,EMA,East Midlands ,Nottingham	289	-50.0%
EGJJ,JER,Jersey ,Saint Helier	283	-58.9%
EGAA,BFS,Belfast Intl. ,Belfast	245	-15.8%
EGCC,MAN,Manchester ,Manchester	234	-54.4%
EGPF,GLA,Glasgow Intl. ,Glasgow	228	-45.8%
EGGD,BRS,Bristol ,Bristol	219	-46.2%
EGPD,ABZ,Aberdeen Dyce ,Aberdeen	211	-19.8%
EGBB,BHX,Birmingham Intl. ,Birmingham	199	-53.5%
EGTK,OXF,Oxford (Kidlington) ,Kidlington	180	-61.0%
EGJB,GCI,Guernsey ,Saint Peter Port	169	-68.2%
EGTE,EXT,Exeter Intl. ,Exeter	154	-34.2%
Grand Total	8,945	-55.2%